

Welcome to Ebbsfleet

Designing-in health and wellbeing

Simon Harrison // Head of Design & Sustainability



Defining design quality in Ebbsfleet

Design Performance Areas

Project Types

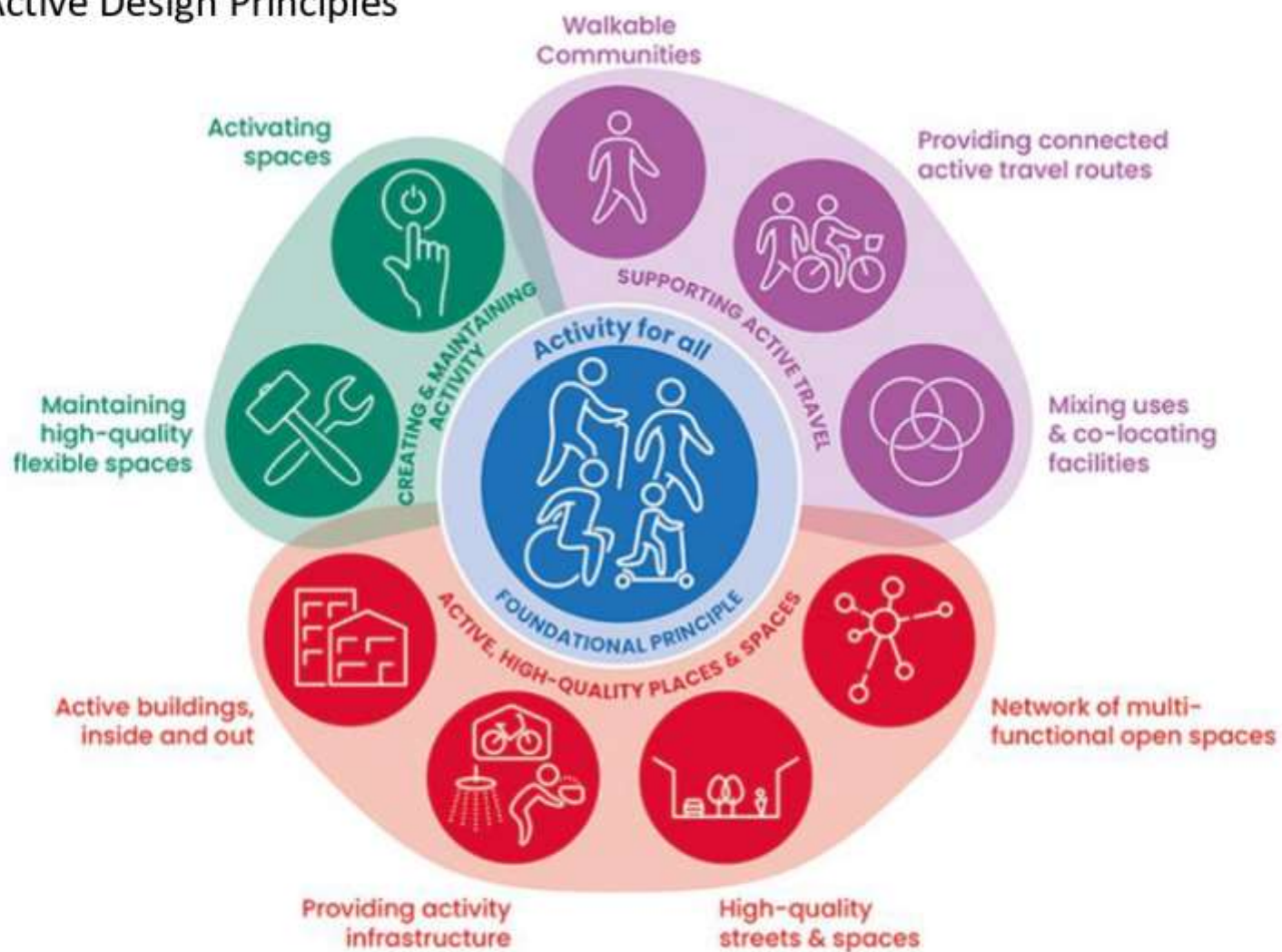
	Neighbourhood Masterplanning	Parks	Streets	Sites / Buildings
Characterful	National Design Guide / Urban Design Compendium			
	Ebbsfleet Implementation Framework			
	Design for Ebbsfleet Character Guide			
	Ebbsfleet Public Realm Strategy			
Inclusive	London Legacy Development Corporation Inclusive Design Standards			B.Reg M4 Part2
Safe and secure	Secured by Design			
	Kent Design Guide / Manual for Streets / LTN 1/20			
Health and wellbeing	Sports England : Active Design			
				Nationally Described Space Standards
				GLA Outdoor Space Standard
				HAPPI (housing for older people)
Sustainable	Ebbsfleet Sustainable Travel Strategy			
				LETI / BREEAM
Biodiversity	Building with Nature			
Water	Water People and Places : KCC Guide			
	CIRIA SuDS Manual			
Waste				
Carbon				

EDC Guidance

3rd Party Guidance

Active design

Sports England's Active Design Principles



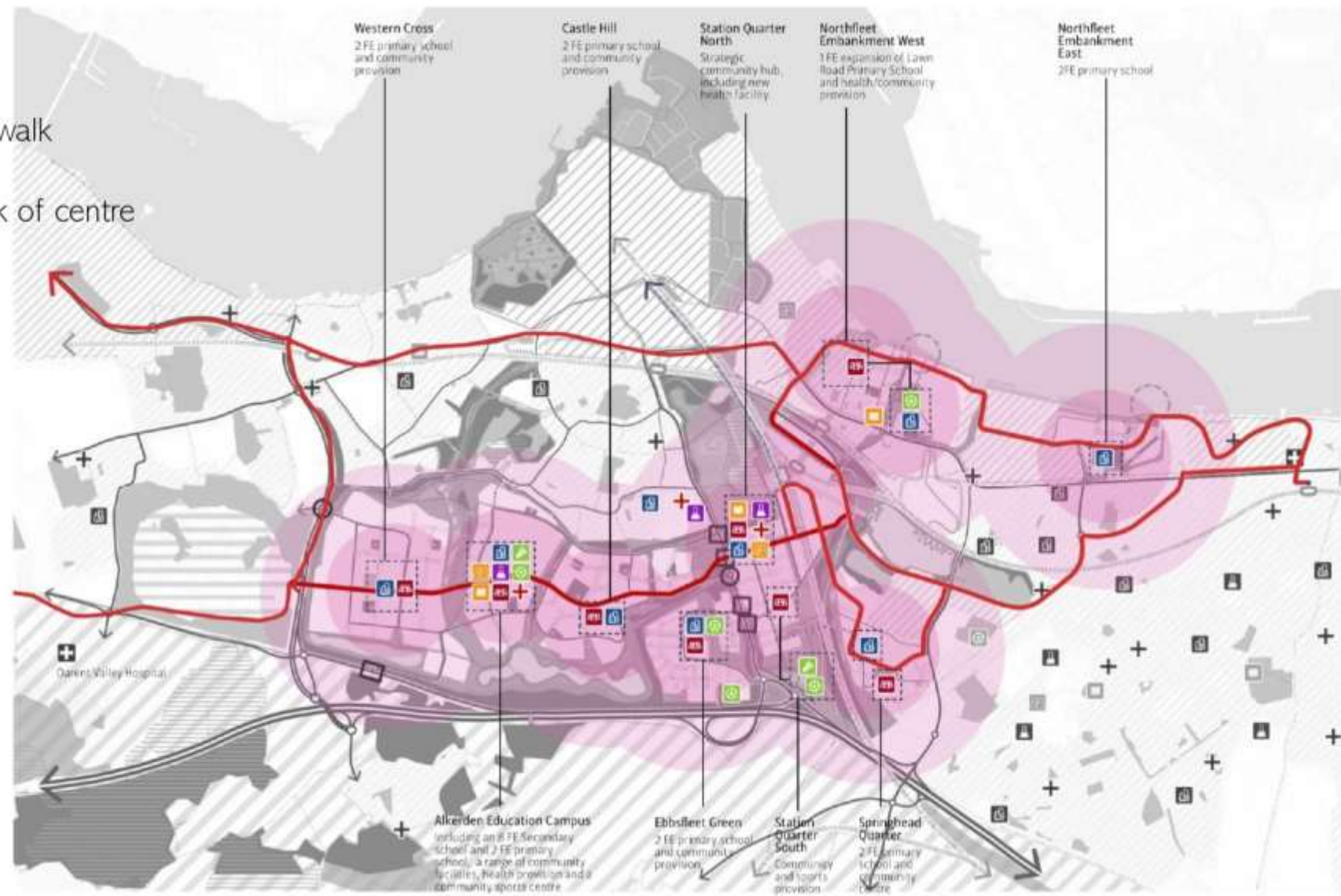


Walkable communities // Masterplanning

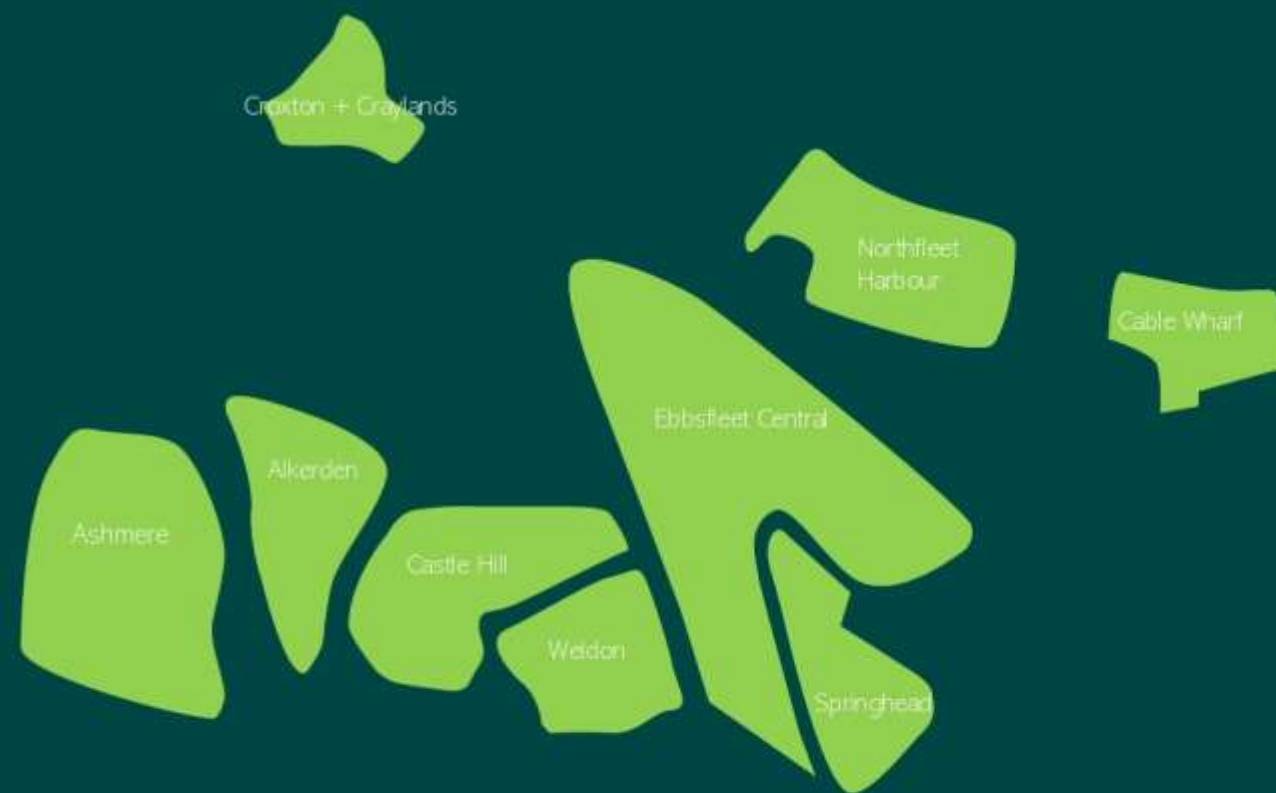
- 8 Urban villages
- All your daily needs in 5 minutes walk
- Each village has a local centre
- 1500+ homes within 5 mins walk of centre
- Yielding 820 students .
- Local stores
- Co-located community centres

Key

-  Primary school with nursery
-  Secondary school
-  Community centre
-  Youth centre
-  Library
-  Primary health care facility
-  Hospital
-  Sports pitch
-  Sports centre
-  400m, 800m walk bands



Ebbsfleet's Villages

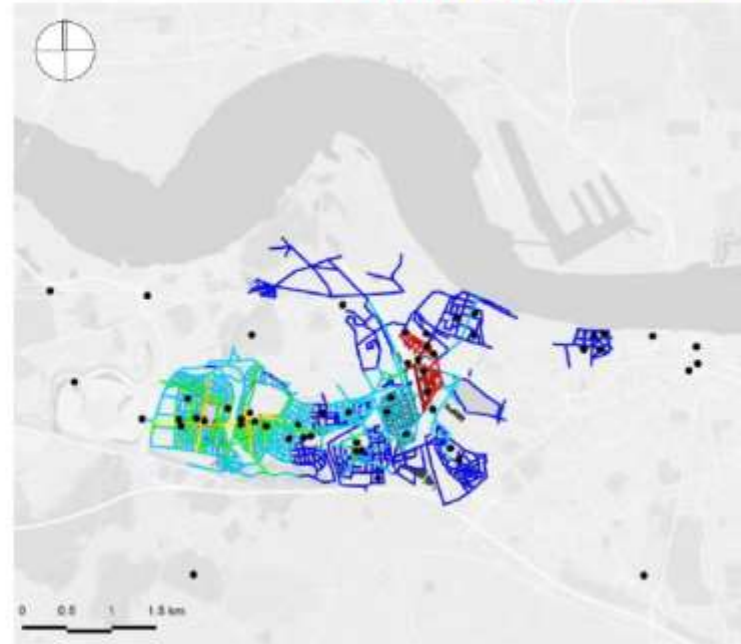




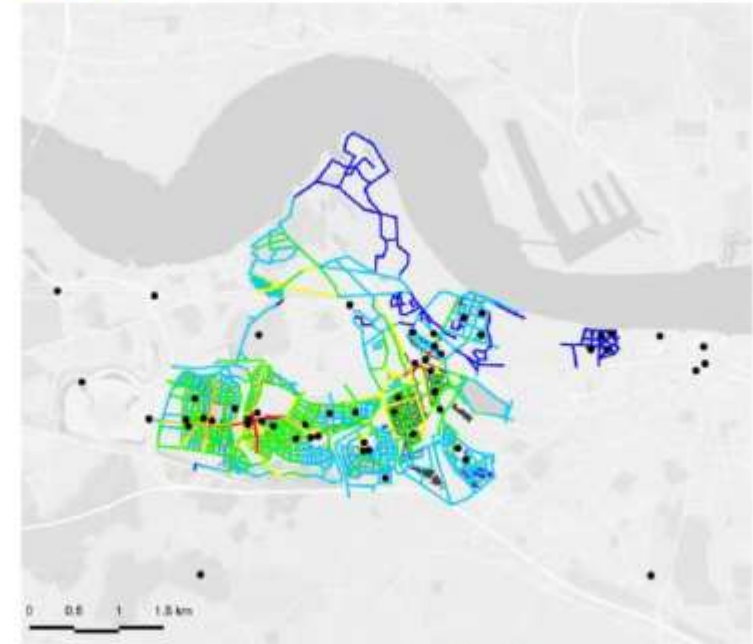
Active travel routes // Mapping active journeys

- Walking and cyclist trip modelling used to establish where people will want to walk and cycle.
- Allows us to 'right size' footpaths and cycle tracks.

35% Scenario Morning peak Combined Pedestrians



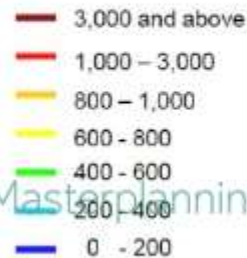
Walking



Cycling

● All origins

Number of trips



Number of trips



Masterplanning // Providing connected active travel routes

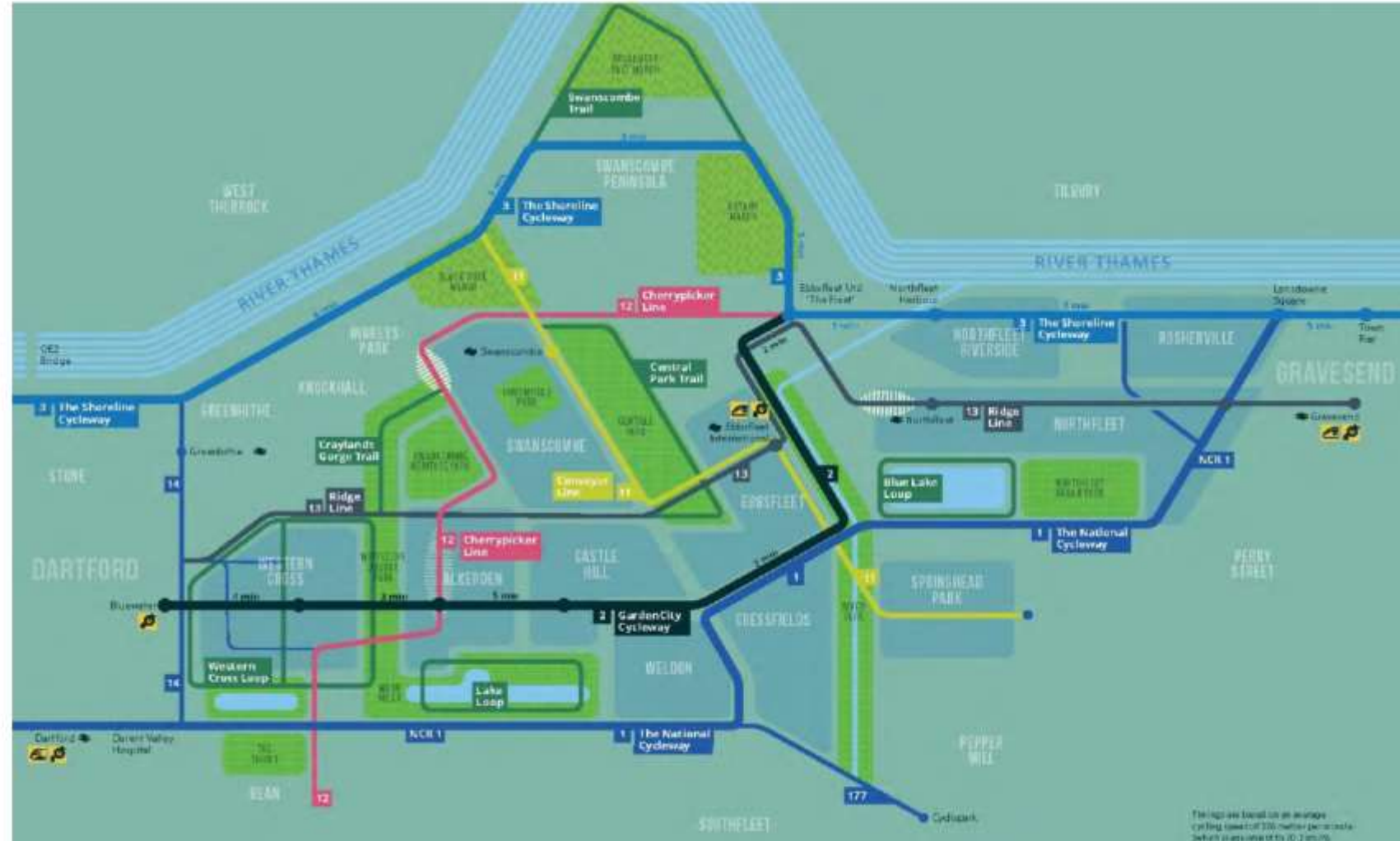


Active travel routes // Developing a comprehensive cycle network

All villages and community facilities are linked by cycle tracks.

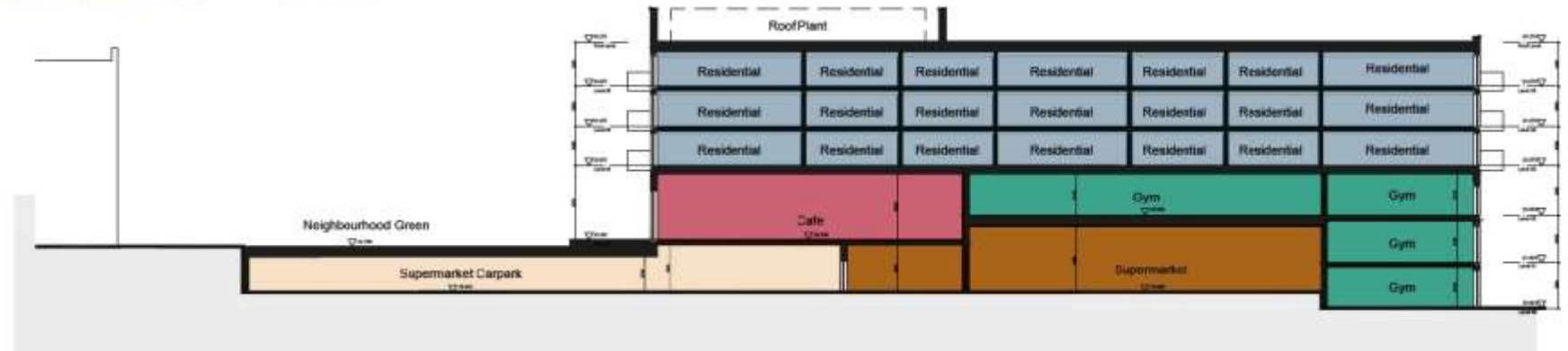
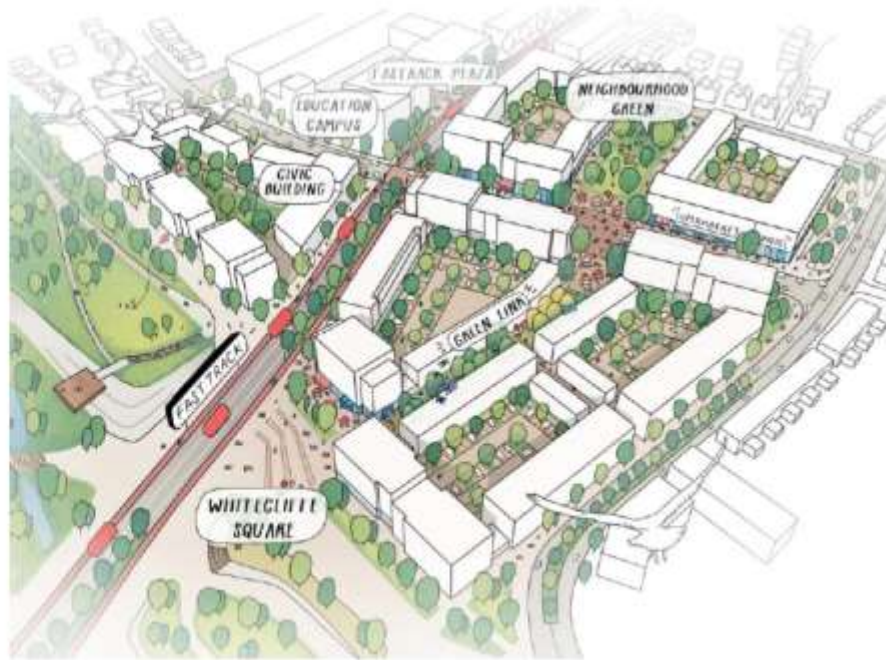
All new cycle tracks will be segregated (80% of network).

A 'tube map' provides an easy way of understanding and memorising cycle network.





Mixing & co-locating uses // Masterplanning



Section 2-2



Mixing & co-locating uses // Rethinking community building

Case study : Weldon Community Hub

- Started life as basic S106 provision in outline masterplan
- EDC's Space in the Place report defined new hierarchy of community facilities.
- Based on co-location of sports, cultural and commercial facilities, to create a sustainable business model for building / facilities.
- EDC co-funding additional facilities, and Garden City Trust engaged in potential ownership and management of facility.





Network of multifunctional open spaces // A green grid

- Over 40% of the land within the EDC boundary is open space, which forms a green grid to connect local habitats with regional networks.
- A parks strategy has been developed to categorise parks by the size, scale and number of people the space is likely to serve.





Network of multifunctional open spaces // Putting the garden into the garden city

- A parks strategy has been developed to categorise parks by the size, scale and number of people the space is likely to serve.
- 54 Parks, classified into 4 types.



City Parks

Key leisure destinations, attracting visitors from across Ebbsfleet and the sub-region.

Unusual / large scale leisure facilities



Local Parks

Destinations within each village in Ebbsfleet, designed for the community to host village wide events, and larger sports and leisure facilities



Neighbourhood Parks

Smaller parks embedded within the street network, providing neighbourhood play, small event spaces, and leisure / recreation for local residents.



Pocket Parks

Small pockets of open space nestled between housing to provide opportunities to exercise and socialize for neighbouring residents





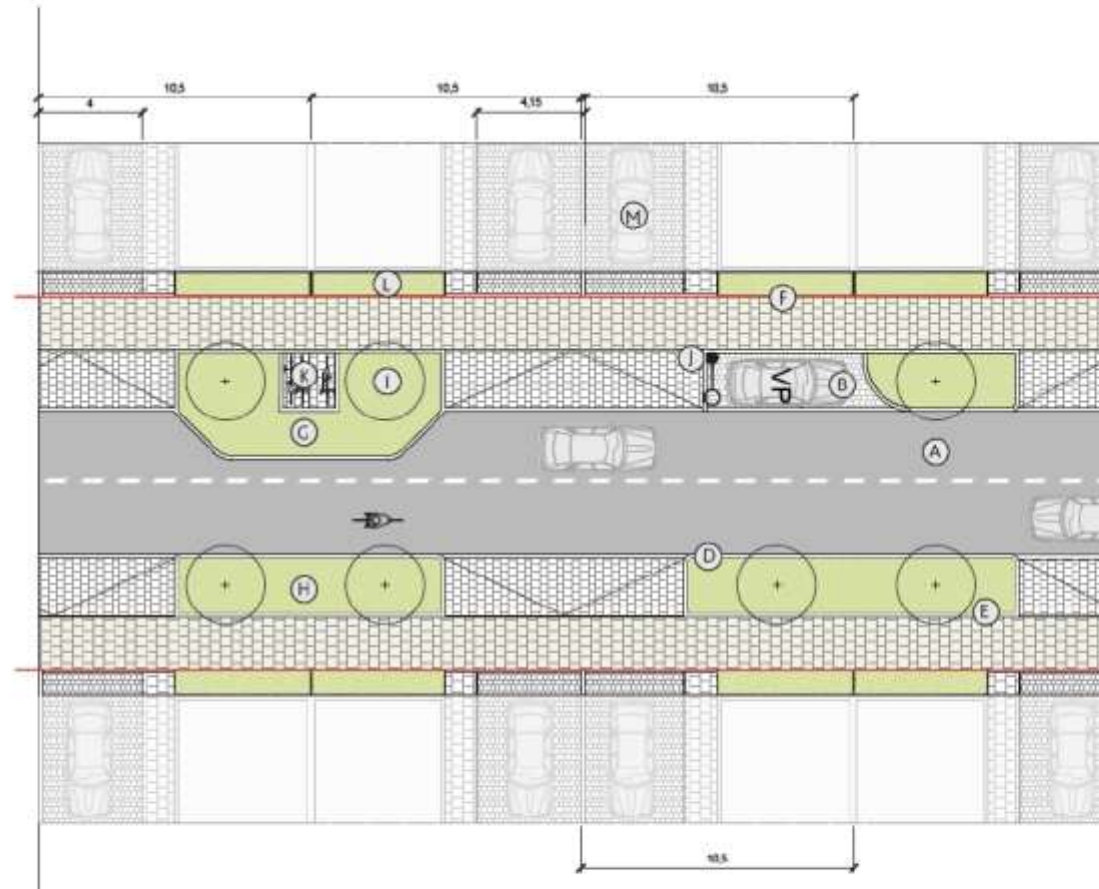
High quality street design// Public Realm strategy – green streets

4 Street Types

- Fastrack Streets
- Secondary streets
- Residential streets
- Laneways / Mews

Street Design Performance Metrics

- Measuring no. of trees per 50m length
- Area of planting per 50m length
- Minimum footpath width
- Minimum cycle-track width
- Maximum carriageway width



- Ⓐ ASPHALT CARRIAGEWAY
- Ⓑ CONCRETE BLOCK PAVING - PARKING BAY
- Ⓒ CONCRETE BLOCK PAVING - PAVEMENT
- Ⓓ UPSTAND CONCRETE CONSERVATION TYPE KERB - 14.5 CM
- Ⓔ FLUSH CONCRETE CONSERVATION TYPE KERB - 14.5 CM
- Ⓕ FLUSH CONCRETE CONSERVATION TYPE EDGING - 50 MM
- Ⓖ PLANTED TRAFFIC CALMING - 1.5M BUILD OUT
- Ⓗ SOFT LANDSCAPE - UNDERSTORY PLANTING AS PER PLANTING STRATEGY (CHAPTER 6)
- Ⓘ STREET TREE PLANTED AT 20-25CM GIRTH / STD 2.4M CLEAR STEM PLANTING STRATEGY (CHAPTER 6)
- Ⓙ LIGHT COLUMN
- Ⓚ BIKE PARKING
- Ⓛ PRIVACY PLANTING
- Ⓜ ON-PLOT PARKING (2 SPACES IN-LINE)

Ashmere



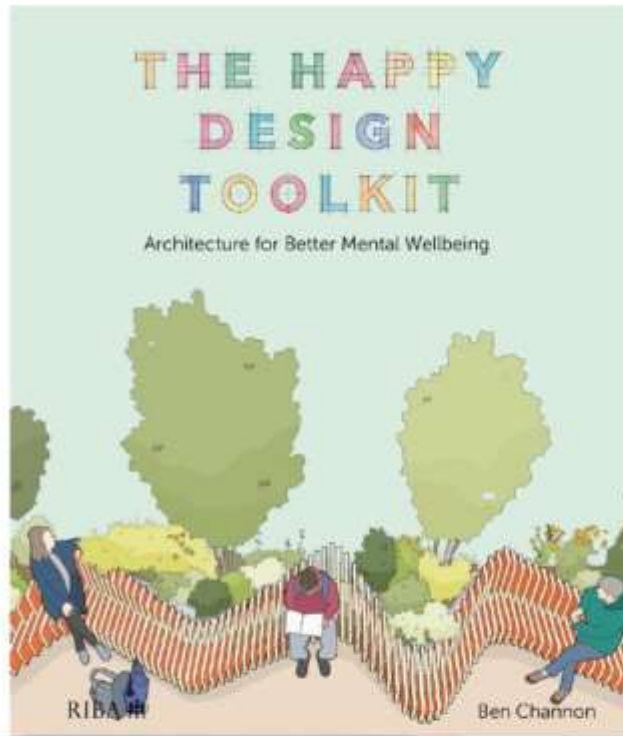


Providing active infrastructure //
High quality, visible and accessible cycle infrastructure





Buildings // Active buildings inside and out



 Introduction 1	 Light, natural and artificial 4	 Comfort and materials 30
 Control and autonomy 40	 Nature and biophilia 92	 Aesthetics and legibility 150
 Activity and exercise 154	 Social interaction, community and sense of place 180	 Conclusions and further thoughts 210



Cloisters and daylit circulation

M

“All truly great thoughts are conceived by walking.”
- FRIEDRICH NIETZSCHE, PHILOSOPHER



Item 17 (2020) Architecture House, San Francisco, USA, Rachel Cooper

- Technical activity
- Nature interaction
- Moments of joy / awe
- Physical comfort

- Architectural form elements
- Space / light requirements



Maintaining high quality flexible spaces // Stewardship strategy

- The Garden City Trust has been developed as the stewardship body, to manage parks and potentially community buildings.
- Ongoing cost of maintenance of open space, and community facilities is therefore a very important consideration
- Lifetime costing developed for all street types and planting palettes.
- Costing work has demonstrated savings for wildflower verges over grass.



COMMUNITY GARDENING AND ALLOTMENTS IN EBBSFLEET

As part of the Ebbsfleet Garden City's aim to create a healthy living environment for residents, community gardens and allotments are being made available. Allotment applications must be submitted by 5 May.

[Apply for your allotment now](#)

EBBSFLEET GARDEN CITY TRUST COMMUNITY FUND

Do you have a creative, fun or interesting idea for an activity that helps build community?

[Learn more about our Community Fund](#)





Activating spaces

- EDC's Placemaking team provide the public face to our growing community
- Developing an annual programme of sports, cultural and leisure events into Ebbsfleet's public buildings parks and spaces.
- Planning application for all new city and local parks to provide an annual events programme.
- Local parks incorporate power and water for hosting events.
- Aim to provide access to a public toilet within or adjacent to local parks

